



Scoop!

January-February 2017
News from the Nebraska Simmental Association

Inside this Edition:

***Executive Director's
Message**

***Private Treaty Ads**

***Production Sale Ads**

***NE Cattlemen's Classic
Info**

***Calendar of Events**

***Sale Reports**

Scoop
PO BOX 150
Rising City NE 68658-0150
ADDRESS SERVICE REQUESTED

PRESORT-STANDARD
US POSTAGE PAID
PERMIT 73
SHELDON IA 51201

Zeis Simmentals

Selling in the

J&C Annual Bull Sale

Saturday, January 28, 2017

West Point Livestock • West Point, NE

Bulls bred for calving ease, balanced performance and maternal traits.



D176

BC Lookout x Dream On
1/2 blood • BW 76, WW 790, YW 1503



D206

Jack Around x Steel Force
3/4 blood • BW 92, WW 730, YW 1345



D66

New Edition x Dream On
1/2 blood • BW 74, WW 700, YW 1214



D546

Jack Around x Meyer
1/2 blood • BW 78, WW 705, YW 1218

Selling bulls from
time-tested cow families
that excel in all facets
of the industry.



D566

Real Steel x New Edition
1/2 blood • BW 81, WW 725, YW 1350

Visitors and calls welcome anytime!

Zeis Simmentals

www.zeissimmentals.com

Dave & Lisa Zeis

26/26 Bennington Rd., Valley, NE 68064

(402) 720-1967 - Cell

J&C SIMMENTALS

22nd Annual Bull Sale

January 28, 2017 • 12:30 PM

West Point Livestock • West Point, NE



D612 • Purebred
Jack Around x T85
2016 IA State Fair Res. Champion



D604 • Purebred
STF Royal Affair x
T85 Ms Fancy Yardley



D602 • 3/4 Blood
Innocent Man x CNN Lucky Girl
2016 IA State Fair 2nd in Class



D606 • Purebred
Broker x Bernadette
2016 IA State Fair Class Winner



D869 • 3/4 Blood
Innocent Man x JS Sure Bet



D4 • Purebred
Twisted Steel x Hardcore



Bob, Jay and Clark Volk

20604 US Hwy 30 • Arlington, NE 68002

Bob, 402-720-0469 • Jay, 402-720-7596

Clark, 402-720-3323 • volkjk@aol.com

Offering.....

150 Bulls

30 Open Heifers

10 Bred Heifers

percentage to purebred

www.jandcsimmentals.com



From the NSA President...Brandon Luebbe, Staplehurst, NE

Every year I say the year went too fast and here we go again to 2017. I asked many people if they have ever seen it rain on Christmas day and the response I get was not that they could remember. Crazy how different the weather can be from year to year.

We begin 2017 with a different President of the United States and cattle prices that are lower, but they have rebounded some towards the end of the year and corn and bean prices are staying level. As we get ready for the bull sales coming up it's important to stay positive and know there is a high demand for Simmental genetics.

The Cattlemen's Classic is coming up in February and I encourage you to check out the offering of cattle, and also we are bringing the banquet back to Kearney, so hopefully you can attend as it is a fun event that helps out the Nebraska Simmental Association.

My favorite time of the year is getting close to starting with calving as we see those new calves hit the ground, and see what matings worked and didn't work. We also get to see the different sire groups and compare with other breeders and the different embryo matings excite me the most because they are out of some of the best cows in the breed.

Good luck to all the breeders with their bull sales as they start to kick off in January. Hope all goes well with calving as the weather changes and fighting through the up and down Nebraska weather can be challenging. Hope to see a lot of you in Kearney at the banquet on Wednesday, February 22nd, as we know it will be a very busy time of the year. Also, good luck to any breeders heading to the National Western Stock show that are showing in the "Yards" or "On the Hill" or even selling cattle and embryos.

Here's to a great 2017 year!

Brandon Luebbe
NSA President

From the NSA Executive Director.....

Diane Duren, Rising City, NE

Hello 2017 and I wish all of you a joyous and prosperous New Year!

In December, I attended the NE Cattlemen's Convention in Kearney, NE, and had a trade-show booth. The NSA was well represented and I was able to talk to cattlemen stopping by that inquired about Simmental genetics. I was able to take a lot of Scoop publications and the Breeder's Directory and hand these out as promotional material.

While there, I had a nice visit with a long time Simmental breeder that had been a member at one time, then hadn't been, but is again. We had a great conversation and his comment about needing to be a paid member has stuck with me and I encourage all of you that aren't paid members of the NSA to consider supporting our great association. He said, "Just because I don't show in the show ring, or attend various other NSA events during the year, I still need to be a member because I benefit from all of the work that the association does to promote our breed, and I need to support those efforts by being a member and paying dues." For that, I appreciate his comments and him recognizing our hard work does make a difference. Thank you Loren Berger!

We have a stout set of Simmental cattle consigned to the NE Cattlemen's Classic. We will have one show this year since we don't have enough entries for Percentage and Purebred in each division (remember the 3/4 bloods show with the PB's). The champions from this show will go on to Supreme. We encourage you to visit Kearney, NE, for the NE Cattlemen's Classic and to attend the Simmental Show and Sale on Thursday, February 23rd. The show will be held at 8:30 AM and the sale will be held at 1:30 PM. We hope to see you there.

We will be having our annual banquet/awards in Kearney on Wednesday, Feb. 22nd. Watch for more details in the mail and email.

This edition of the Scoop is jam packed with ads. Please take the time to look at all of the breeder's ads and make plans to attend many of the production sales advertised in this edition. I will be taking extra copies to the Cattlemen's Classic along with of some of the upcoming production sales that I can attend.

In closing, I hope to see many of you in Kearney or at upcoming production sales. Until next time, Diane



Nebraska Simmental Scoop

Diane Duren, Editor & Publisher

PO Box 150

Rising City NE 68658-0150

Cell (402) 367-2272

E-mail Address: dianeduren60@gmail.com

or www.nesimmental.com

Please contact the above named for
advertising, subscriptions, editorial or
change of address.

Postmaster:

Please send *The Scoop*
address changes to:

Nebraska Simmental Association

Diane Duren, Editor & Publisher

PO Box 150

Rising City NE 68658-0150

The Nebraska Simmental Scoop is a non-profit publication prepared by the NSA for the purpose of promoting Nebraska Simmental cattle. The NSA Simmental Scoop is printed four times per year. (January, April/May, Sept/Oct, Nov./Dec), as per schedule dates and is mailed to 3,450 American Simmental Association and Associate members, as well as commercial cattlemen in the State of Nebraska and surrounding states.



www.nesimmental.com

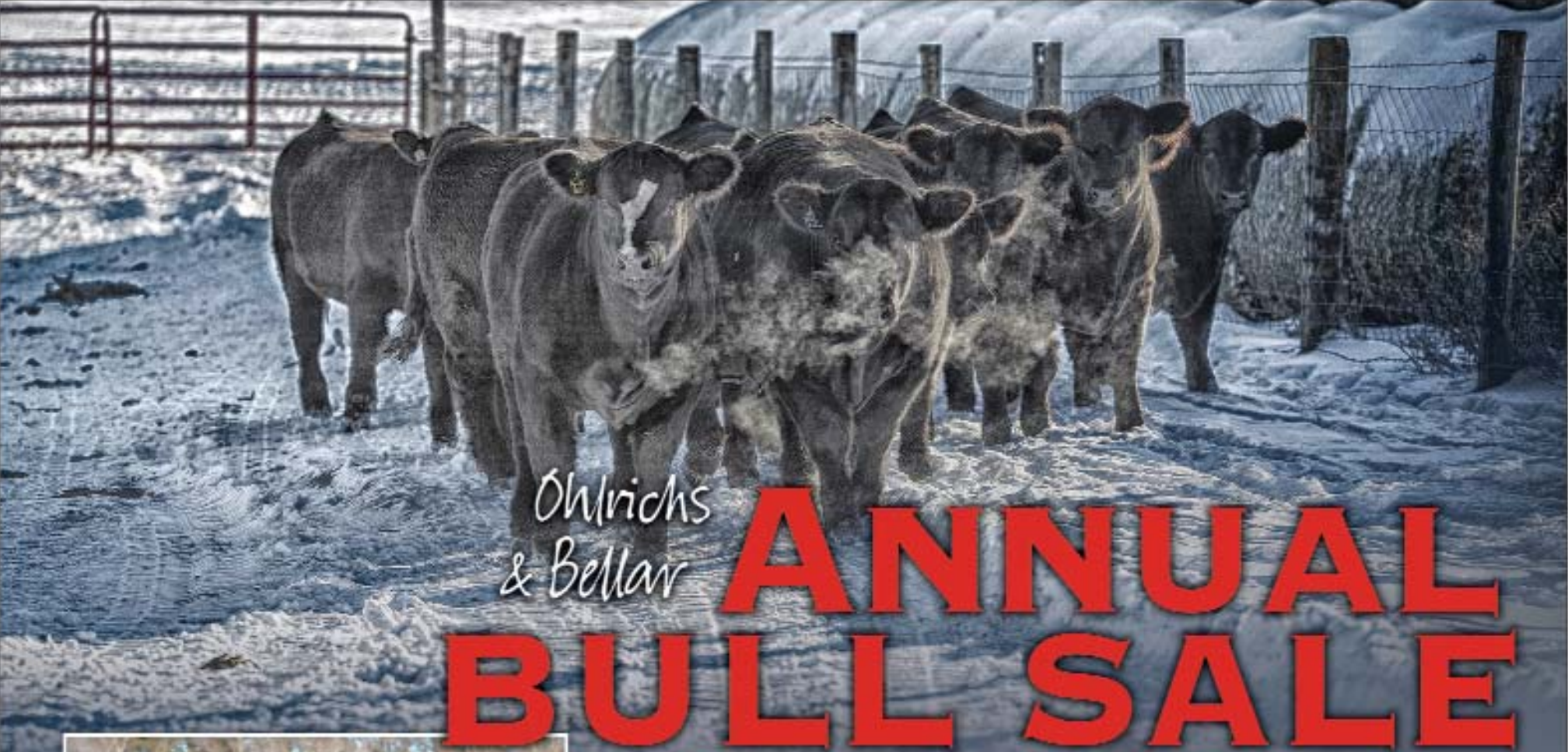
NSA Board of Directors

Brandon Luebbe, President	(402) 643-5071
Nick Petersen, Vice-President	(402) 720-7476
Jake Ruth, Secretary	(402) 367-8390
James Felt	(402) 369-0513
Dave Zeis	(402) 720-1967
Scott Trauernicht	(402) 239-1272
John McBee	(573) 682-7894
Mark Smedra	(308) 293-9163
Jim Zvolanek	(402) 674-3374
Diane Duren, Executive Director	(402) 367-2272

Front Cover Design
by Diane K. Duren-

Photomade possible by Ohlrichs Ranch, Norfolk, NE
Photo taken by Shannon Cook.

www.nesimmental.com



*Ohlrichs
& Bellar*

ANNUAL BULL SALE

Saturday, February 4, 2017

1:00 p.m. at the OHL Ranch, Norfolk, Nebraska



PB ANGUS ...
THEIR FULL
BROTHER
SELLS!



This year we will be selling approximately
60 Bulls & 10 ELITE Bred Heifers.

Breeds represented ... Simmental, Angus, Chi and Maine-Anjou.



HLRICH'S

Wayne & Barb Ohlrichs

c: 402.649.5804 c: 402.649.6911

h: 402.371.0695

WATCH FOR MORE INFORMATION

AT WWW.OHLRICH'S.COM & WWW.BELLARCATTLECO.COM

Randy Bellar
c: 402.380.3710 or h: 402.529.3518

PO Box 734, Wisner, NE
Jeff Williams, 402.380.9049





NEBRASKA CATTLEMEN'S *Classic* 2017 SCHEDULE

F E B R U A R Y 1 8 - 2 6 , 2 0 1 7

BUFFALO CO. FAIRGROUNDS, KEARNEY, NEBRASKA

30 RANCH HORSES SELL
SUNDAY, FEB. 19TH | 2 PM



COMMERCIAL
TRADE SHOW &
CLASSIC MARKETPLACE

SATURDAY, FEBRUARY 18TH
SATURDAY, FEBRUARY 25TH
10 AM-6 PM

The Classic features a tremendous
commercial trade show.

Saturday, February 18

10 am-6 pm... **NEW!** Rustic Cowboy Mercantile
*Located in Commercial Trade
Show Area; Special Displays for Open-
ing Weekend, including
unique Antiques*

8:30 am All Horses in East Arena
8:30-9:30 am Ranch Horse Evaluation
10 am Ranch Horse Versatility
2 pm Team & Open Roping Preview
5 pm Ranch Rodeo
7:30 pm **NEW!** Draft Horse Feed
Leans Race

ALL events for Sale Horses Only. Sale Horses
will be stalled in the Ag Pavilion Dirt Arena.

Sunday, February 19

8 am Cowboy Church (Auction Block)
Includes Live Music
9:30 am Working Cow Horse Competition
10 am-6 pm **NEW!** Rustic Cowboy Mercantile
*(Located in Commercial Trade
Show Area)*
2 pm Ranch Horse Sale

Monday, February 20

8 am Ag Pavilion Only
Cattle Stalls Open
8:30 am-2 pm National CattleDog
Association Trial
10 am-4 pm **NEW!** Career Fair
Noon Cattlemen at the Classic
Luncheon
7 pm East Arena Cattle Stalls Available

Tuesday, February 21

Cattlemen & Consumers Day at the Classic
8:30 am-2 pm **NEW!** FCS/ProStart "Cookin' at the
Classic" Beef Culinary Contest
11 am-7 pm Come & Get Your
Commercial Deals
*Have fun in the Commercial Trade Show & get
Classic Cash to be used throughout the week.
This is the only time to get 2017 Classic Cash.*
12 pm **FREE** Cattlemen's Lunch in the
Commercial Trade Show

Tuesday, February 21

2 pm Classic Steak Cook Off
(open to all) Teams check-in
6 pm Classic Steaks turned in to judges
5 pm "Rattle of the Breeds"
in the show ring
Enjoy Beef samples and a social.
5 pm "Wine, Wheels & Hoofs"
*Socialize and take pictures
with some specialty vehicles
from the past. Displays by the
Classic Car Collection.*

Wednesday, February 22

Youth Education Tours, H&A Day
9 am Hereford Show
10 am Red Angus Show
10 am Polled Hereford Show
1:30 pm Hereford Sale
2 pm Polled Hereford Sale
3 pm Red Angus Sale
5 pm Kuhn Knight Cattlemen's Social

Thursday, February 23

8:30 am Angus Show
8:30 am Simmental Show
10 am Charolais Show
10 am Limousin Show
10:30 am Gelbvich Show
12:30 pm Angus Sale
1:30 pm Simmental Sale
2:30 pm Charolais Sale
3:30 pm Limousin Sale
4 pm Gelbvich Sale
6:30 pm Cattlemen's Social
**Please note the change this year, all
embryo, flush and semen packages are
part of respective breed sales.*

Friday, February 24

9 am Shorthorn Show
10 am Maine Anjou Show
11 am Chianina Show
11:30 am Classic Open Bull & Heifer Show
1 pm Shorthorn Sale
1:30 pm Maine Anjou Sale

Friday, February 24

2 pm Junior Stalls Posted
2 pm Chianina Sale
2:30 pm Classic Open Bull & Heifer Sale
4 pm Replacement Heifer
Pen of 5 Sale
6-9 pm Junior Check-In
7 pm Sullivan Stock Show U
7:30 pm **NEW!** Used Show Equipment
Swap Meet

Saturday, February 25

7 am-2:30 pm Judging Contest
(Exhibit Bldg. & Extension Bldg.)
7 am Registration (Extension Bldg.)
8 am Contest Begins
2 pm Judging Contest
Official Placing
2:30 pm Youth Division Awards
(All Awards in Extension Bldg.)
7-8 am Junior Show Check-In
(Stafford Arena)
12 pm Fancy Heifer Show & Parade of
Prospect Steers
12:30 pm Prospect Steer & Heifer
Scholarships Award
Presentations (Auction Block)
12:45 pm Fancy Heifer Sale
followed by the Steers
2 pm Showmanship-Blow n Go*
**There will be lay outs for showmanship. Youth Ring
will be inside North Ring and be announced. Senior
Division will follow the showmanship in the North
Ring. Senior Finals will occur the entire day. (We will
work to have Showmanship completed by 6 pm, in the
event that Senior Showmanship is not finished we will
reschedule Senior Finals.)*
6 pm Premiere Heifer Selection
*(All heifers purchased at the 2016
Classic Sales will compete in this class.
there will be prizes for all youth.)*
7 pm Supreme Row Judging

Sunday, February 26

Junior Shows (2 rings)
8:30 am Breeding Heifers
9 am Market Heifers (followed by Steers)

Saturday, February 18 - Saturday, February 25

10 am-6 pm Commercial Trade Show & Classic Marketplace

Wednesday, February 22 - Saturday, February 25

10 am-6 pm Live Cattle Displays

FOR COMPLETE DETAILS CALL RONETTE K. BUSH-HEINRICH AT 308.627.6385, WWW.NECATTLEMEN.COM OR FOLLOW US ON FACEBOOK



Classic Sales can be viewed at LiveAuctions.TV



The NEBRASKA Classic

BUFFALO CO. FAIRGROUNDS, KEARNEY, NEBRASKA

SIMMENTAL SHOW & SALE

THURSDAY, FEBRUARY 23RD, 2017 SHOW 8:30 AM | SALE 1:30 PM

THE CLASSIC SALE FEATURES BULLS, BRED HEIFERS, FANCY OPEN HEIFERS & EMBRYO PACKAGES.



Mr Bandwagon D6

this fancy purebred bull is loaded with style and performance.



LZF Sid 133D

a halfblood Chopper daughter that has unlimited potential!



Mr SB Disclosure 36D

This bull was the 2016 American Royal PTP Show Res. Champ Percentage Bull Calf. He is sired by Mr Hoc Broker.



Jenny of Rancher

Cattlemen if you are looking for a tremendous cow, look here!



Erica 027D

This fancy halfblood heifer is sired by Lock N Load. Juniors take notice here!



The 2016 Classic Supreme Champion Female was the Champion Simmental.

The 2017 Classic sale features several bred females.

Don't Miss
THE EMBRYO PACKAGES IN
THE SIMMENTAL SALE!



Donor BF Miss Steel Force 83W

Here is an
opportunity to
purchase
Steel Force x W/C Loaded Up
embryos!



W/C Loaded Up

FOR COMPLETE DETAILS CALL RONETTE K. BUSH-HEINRICH AT 308.627.6385, WWW.NECATTLEMEN.COM OR FOLLOW US ON FACEBOOK



Classic Sales can be viewed at LiveAuctions.TV

LiveAuctions.TV



HETEROSIS HEADQUARTERS

Annual Bull Sale At the Ranch - Dannebrog, NE

JANUARY 30TH ~ 1 PM

SimAngus™ - Angus - Angus Hybrid — 112 Head Sell!

THREE ET BROTHERS SELL! - Connealy Capitalist x G A R New Design 5050



Lot 1 | Angus



Lot 2 | Angus

Selling 72 'Super Stout' Two-Year-Olds, 21 'Powerful' Fall Yearlings and 19 'Dynamic' Yearlings!

Complete Performance, Genomic Enhanced EPDs, Ultrasound and Scrotal Data Provided!

16.1 AVG REA ON ALL BULLS!

**VOLUME DISCOUNTS!
DEVELOPED ON HIGH ROUGHAGE RATIONS!**

Power Bulls with Calving Ease Genetics, Good Feet, Extra Thickness and Eye Appeal!

YEARLING BULLS



**LOT 95 - SimAngus
By Cowboy Cut**

BW 91 | WW 879 | YW 1423 | REA 20.28



**LOT 97 - SimAngus
By Loaded Up**

BW 92 | WW 866 | YW 1664 | REA 19.80



**LOT 98 - SimAngus
By Loaded Up**

BW 87 | WW 804 | YW 1353 | REA 21.67

// *The first APEX bulls were bought on Superior, and when they arrived, I could have not been more satisfied. The bulls bred cows up quick, and the calves are outstanding! The second group of bulls, again bought sight unseen, with the recommendation of Dan, are absolutely tremendous. As a group, both sets of bulls are the best I have ever owned! I want good calving ease with lots of pay-weight performance, and these bulls are just right for my operation. I must add, the performance, depth and thickness of the bulls is most impressive, definitely something that we all need to add more profit.* **//**

Food served by Cactus Jacks, 5X Nebraska State Fair Vendor of the Year!

-JIM RICHARDSON, PAMPA, TEXAS

ALLIED
GENETIC RESOURCES

APEX CATTLE - YOUR HYBRID SOURCE!

Free Delivery in Nebraska and Adjoining States on Individual Lot Purchases of \$3,000 or More!

Call Dan at 308-226-2576 or email sales@apexcattle.com

APEX Cattle, 1146 7th Avenue, Dannebrog, NE 68831





Lot 4 | By Cowboy Cut — SimAngus™



Lot 13 | By Loaded Up — SimAngus™



Lot 14 | By Loaded Up — SimAngus™



Lot 18 | By Loaded Up — SimAngus™



Lot 22 | By Loaded Up — SimAngus™



Lot 25 | By Barstow Cash — SimAngus™



Lot 39 | By Up North — SimAngus™



Lot 75 | By Loaded Up — SimAngus™



OUR OLDER BULLS RECEIVE NO CORN!

*Only home grown, ground grass hay/corn stalks/silage
with limited wet distillers to increase palatability.*

The good feet on our older bulls is proof of our experience in feeding them right!

Progeny also sell by Kramers Apollo, Dameron Northern Light, W/C United, Yardley Utah, Leachman Prophet and LLSF Pays to Believe ZU194!

Videos, More Photos and Online Catalog at APEXCattle.com

HETEROSIS...DON'T BE IN BUSINESS WITHOUT IT!

Multi-breed Stayability: First EPDs Using BOLT

By Drs. Jackie Atkins, Lauren Hyde, and Wade Shafer

It's here! The Spring 2017 evaluation includes a multi-breed Stay EPD using the much anticipated new genetic evaluation software, dubbed BOLT (Biometric Open Language Tools). The Stay EPD uses a random regression approach to predict stayability

developed by Dr. Janusz Jamrozik and colleagues from the University of Guelph and the Canadian Simmental Association. Dr. Scott Speidel at Colorado State University, Dr. Bruce Golden (Theta Solutions), and the genetics team at International Genetic Solutions (IGS) (Lauren Hyde, Wade Shafer, Mahdi Saatchi, and Steve McGuire) worked together to incorporate the new methodology into the IGS evaluation. The new stayability evaluation includes data on animals of varying breed composition, directly incorporates genomic data, produces true accuracy values and provides Stay EPDs to all IGS partners on a common base.

Features of the Multi-breed stayability with BOLT:

1) Multi-breed stayability. As mentioned, the new Stay EPD is calculated for all cattle in the database (not just for purebred and fullblood Simmental, as it was in past evaluations). The calculation of EPDs in this fashion required the new evaluation to account for heterosis, which can be sizable for a trait like stayability. Because stayability has a major impact on profit, having Stay EPDs on all cattle will substantially improve the ability of the All Purpose Index to predict differences in profit on hybrid and cattle of other breeds.

2) Direct incorporation of genomic data. This evaluation represents the first time "Single Step" methodology has been used in the beef industry on a large database. The innovative approach refers to DNA marker results being incorporated directly into the genetic evaluation, rather than being incorporated post evaluation or as a correlated trait. Single Step is widely accepted as the most powerful means of leveraging DNA for genetic prediction. The use of a Single Step approach on a large database (the largest in the beef industry) was made possible through the use of BOLT, ASA's revolutionary new software developed by researchers Dorian Garrick and Bruce Golden through Operation Quantum Leap.

3) More "accurate" prediction of accuracy. Prior to BOLT, the calculation of EPD accuracy was relegated to using indirect methods that were very imprecise, which commonly resulted in calculated accuracies being a poor estimate of the EPD's true accuracy, i.e., an EPD assigned a high accuracy may have truly been a low accuracy EPD and vice versa. Until the development of BOLT, the direct calculation of accuracy was thought to be impossible on a large database due to computational limitations. By leveraging statistical methodology unique to genetic evaluation and cutting-edge computer programming, BOLT calculates accuracy directly, thereby making it a much more "accurate" estimate of true accuracy.

Because the indirect methods used prior to BOLT tended to overestimate accuracy, you will notice that the accuracies associated with our new Stay EPDs will tend to be lower than the accuracies calculated in the prior evaluation of stayability. This does not mean that we are predicting stayability less accurately than we did in our previous evaluation--in fact, due to BOLT's ability to leverage phenotypes and genotypes more ef-

fectively we are actually predicting stayability with considerably more accuracy--it does mean that the published accuracy is now a better gauge of how much confidence you should have in an EPD. This fact will help seedstock and commercial producers better manage selection risk.

4) Change in base. Breeders will see significant movement in Stay EPDs from previous evaluations, not only because of improvements in methodology, but also because of a change in base. However, changing the base does not affect the ranking of cattle; it simply shifts all EPDs up or down by the same increment. For a point of reference, in the prior evaluation 21 was the average Stay EPD on purebred animals born over the last 2 years, where the average on the same animals is 11 under our new system.

Congratulations to the 2016 NE State Fair Nebraska Simmental Assn. Premier Breeders & Exhibitors!

Division A: (8 or more)

Premier Exhibitor/ Premier Breeder

Volk Livestock/Dean Volk,
Battle Creek, NE

Res. Breeder

Rains Simmentals, Dorchester, NE

Res. Exhibitor

Felt Farms, Wakefield, NE

Division B: (7 or less)

Premier Exhibitor:

Ruth Simmentals, Rising City, NE

Reserve Exhibitor:

BF Black Simmentals, Auburn, NE

Premier Breeder:

BF Black Simmentals, Auburn, NE

Reserve Breeder: TIE

River Lane Simmentals, Brady, NE
& Ahlberg Cattle, Longmont, CO

Congratulations to all of you. A plaque will be awarded at the 2017 Annual Banquet in Kearney.

35th Annual Sale

Blue River Gang Sale

SIMMENTAL
SIMANGUS[®] & ANGUS

**SELLING 100
ELITE LOTS**

HERD BULL PROSPECTS

POWERFUL BRED HEIFERS

FANCY OPEN REPLACEMENT HEIFERS

SPRING PAIRS

SUNDAY, FEBRUARY 5, 2017 | 12:00 NOON | RISING CITY, NEBRASKA



SIM
ANGUS[®]

Ruth Mr. D559

BF Mr Confidence x FF Ms Rockin A559



SIM
ANGUS[®]

Ruth Mr. D112

BF Mr Confidence x Triple C Queens Supreme



Purebred
SM

LLSF Defendent C91

W/C BF Innocent Man x LLSF Untouchable U925



ANGUS

JMAK Angus Valley 5508

JJR Angus Valley 855 x SAV Registry 2831



SIM
ANGUS[®]

Ruth Mr. D109

NLC Mr Upgrade U8676 x Kruggrand



3/4 SM

Ruth Ms. D122

BF Mr Confidence x Triple C Queens Supreme



ANGUS

JJR Miss Delia 6500

JJR Angus Valley 855 x SAV Bismarck 5882



3/4 SM

Ruth Ms. D86

Remington Lock N Load x SVF Steel Force 5701



Bred to
The Judge

Ruth Ms. B50

BF Mr Confidence x Meyer Ranch 734

Join us Feb. 5!

Ruth Simmentals

Russ, Barb & Jake Ruth
402.542.2200
Russ 402.367.8221
Jake 402.367.8390

Makovicka Simmentals

John & Connie Makovicka
402.549.2323
Cell 402.367.1120

Mach Simmentals

Larry & Margaret Mach
402.663.4682
Cell 402.613.8004

BID ONLINE AT:
LiveAuctionsTV

**PROFESSIONAL SALE
MANAGEMENT:**

Eberspacher
ENTERPRISES INC.

Val & Lori Eberspacher
Office 507-532-6694
Val's Cell 612-805-7405
Kelly Schmidt 406-599-2395
sales@ebersale.com

Full sale offering online at
www.ebersale.com

BF BLACK SIMMENTALS

Semen for Sale

\$75/unit

ASA #2785174

*Homo Black
Homo Polled
Calving Ease*



WC/BF Innocent Man enjoying the fall pastures of West Texas, breeding on a set of heifers for Brandon Bird. Innocent Man is surely the proven go-to heifer bull!

*Semen available on WC/BF Innocent Man from:
BF Black Simmentals - Cattle Visions - Vogler Semen Center*



BF Billy Joel

ASA #2988149

Sire: WC/ BF Innocent Man
Dam: Kenco Glamorous 430W



The Judge

ASA #2969812

Sire: Mr. TR Hammer
Dam: Longs Foxy Lady



SC Pay In Cash

ASA #2988789

Sire: CNS Pay to Dream
Dam: LLSF URA Baby Doll

Purchase 10 units of Innocent Man and receive 3 units of your choice-

Billy Joel • The Judge • Pay In Cash

***** Semen available on all bulls NOW! *****



BF BLACK SIMMENTALS

Bill & Lana Fulton • 64275 730th Rd. • Auburn, Neb. 68305

402-274-5608 (H) • 402-274-7454 (C) • 402-274-5257 (Fax)

Mgr: John L. McBee - 573-682-7894

billandlana@windstream.net • www.bfcattle.com



FORSTER FARMS

38th Annual Simmental Production Sale

Saturday, **January 28, 2017**, 1:00 p.m. (CST)

at the ranch - Smithfield, Neb. (one mile east of Smithfield on Hwy. 23, then 1/2 mile north)

SELLING: 80 Bulls (Simmental/Simm/Angus) All Bulls sell with a First Season Breeding Guarantee.

50 Bred Females (Bred to Top Calving Ease Bulls) • **25 Fancy Open Heifers**



FF GRADUATE D714

1/2 SM, 1/2 AN

SIRES: SDSU GRADUATE X GAR INTEGRITY



FF GRADUATE ET D882

1/2 SM, 1/2 AN

SIRES: SDSU GRADUATE X TC FREEDOM, ET



FF GRADUATE ET D956

1/2 SM, 1/2 AN

SIRES: SDSU GRADUATE X TC FREEDOM, ET



FF MS COWBOY D1070

3/4 SM, 1/4 AN

CCR COWBOY CUT X GLS COMBINATION



FF MS GRADUATE D1215

1/2 SM, 1/2 AN

SDSU GRADUATE X CONNEALY FINAL PRODUCT



FF MS REDESTINED C1262

1/2 SM, 1/2 AN

SIRES: GW REDESTINED X SLGN SAM
BRED TO FF BRILLIANCE C1310



FF MS PARAMOUNT C1390

3/4 SM, 1/4 AN

SIRES: GW PARAMOUNT X MONOPLY
BRED TO HOOVER DAM

For more information, contact:

FORSTER FARMS

74096 Road 434 • Smithfield, NE 68976 1039

email: alan_forster@hotmail.com

Office 308 472 5036

Alan 308 991 2208

Craig 308-472-1429

Kevin 308-472-5321

Verlouis: 308-472-3086

Sale Day Phone:

308-472-5036

Join us for a great lunch!

AUCTIONEER:

Tracy Harl • 402-461-3575

DVAuction
Broadcasting Real-Time Auctions

Sale broadcast realtime on DVAuction.com;
live and proxy bidding



Like us on Facebook or
check out our NEW webpage at
www.ForsterFarms.com

NP Cattle Co.

Raising Quality Percentage & Purebred Simmental Cattle

Selling in the

J&C BULL SALE

Saturday, January 28, 2017 • West Point, NE

NPC Crysteel Man D604



Sired by Innocent Man
Adj. WW 921 | Adj. YW 1401

NPC Manny D93



Sired by Innocent Man
Adj. WW 883 | Adj. YW 1370

NPC Lucky Image D624



Sired by Sharper Image
Adj. WW 828 | Adj. YW 1281

NPC No Regrets D610



Sired by No Remorse
Adj. WW 917 | Adj. YW 1328

Bulls like these will sell Private Treaty.

We have a great set of Yearling & Two-Year-Old Bulls to sell at the Farm!

NP Cattle Co.

Nick, Nicki, Ty & Emerson Petersen

1663 County Road 17 • Fremont, NE

Cell: (402) 720-7476 • Email: npcattleco54@gmail.com

WALSH SIMMENTAL

Pursuit of Excellence Bull & Female Sale *Saturday, March 4, 2017*

Sales starts promptly at 12:00 Noon • Hubbard, Nebraska

Genetics you can depend on!

71 HEAD SELL ON MARCH 4!



WS REVIVAL B26

\$160,000 bull purchased by C-Mor Beef, Blackford Show Cattle, Bar Q H Farms & JS Simmentals



WS STEPPING STONE

\$52,000 bull that sold to Yardley Cattle Co. Beaver, Utah



WS A STEP UP X27

\$55,000 bull selling to Bar Q H Farms Chanderville, Illinois

40 sons (yearling to 18 month old) plus 25 fancy open heifers & 6 elite bred females sell from these breed leading herd sires!



LLSF UPRISING



W/C LOCK DOWN

Be sure to watch for our Pen of Bulls in Denver!

**Join us at the
farm 1989 Hwy. 35
Hubbard, NE!
All are welcome!**

JERRY & LINDA WALSH & FAMILY
1989 Hwy. 35
Hubbard, NE 68741
Phone 402-632-4697
Cell 712-259-4478
JUSTIN WALSH Cell 712-259-0963
JOE WALSH Cell 712-259-0015

Professional Sale Management:
Eberspacher
ENTERPRISES INC.

**Coming soon – full sale offering online at www.ebersale.com
or contact sale management for a sale catalog today!**

Sale Managers: Val & Lori Eberspacher
2904 Co Rd 6, Marshall, MN 56258
OFFICE 507-532-6604 • CELL 612-805-7405
Fax 507 532 9457 • sales@ebersale.com
Kelly Schmidt 406 599 2395

TRIANGLE J Ranch

Nebraska's Largest Source for Homozygous Black,
Homozygous Polled SimAngus™ Genetics



27th Annual Bull Sale Sunday, January 29, 2017

1:00 PM (CT) • At the Ranch, Miller, NE
Selling 175 Simmental, SimAngus & Angus Bulls



5250 HOOK'S BOZEMAN 8B x TJ MS 7W
• One of five Purebred Flushmates.



5450 HOOK'S BOZEMAN 8B x TJ U19
• One of ten Hook's Bozeman 8B sons to sell.



5510 REMINGTON LOCK N LOAD 54U x TJ 44Y
• One of seven Full Sibs Selling.



5550 CCR COWBOY CUT 5048Z x TJ 16Z
• 3/4 with 158+ API.



5100 TJ MAKERS MARK 215Y x TJ 8T
• Top 2% YW and TI Top 1% API.



5120 TJ MAKERS MARK 215Y x TJ 8T
• Full sib to 5100, Big Time Figures!!

FEATURED SIRES INCLUDE: TJ Main Event • TJ Cornhusker • CCR Cowboy Cut • TJ Cowboy Up • TJ Makers Mark • TJ Sharper Image • TJ Z54 Maverick

ALLIED
GENETIC RESOURCES

Marly Ropp 406-561-7835
Garrett Thomas 936-714-1591
Rocky Forseth 406-590-7984
www.alliedgeneticresources.com

THE WORLD'S #1 LIVE AUCTION MARKET
ALLIED
ALLIEDonlinesales.com
Powered by **DVAuction**

TRIANGLE J
Ranch

Darby and Annette Line
35355 Arrow Rd. Miller, NE 68658
Phone: 308-457-2505 Cell: 308-627-5085
www.trianglejranch.com

Call us today to request a sale book.

Visit our website for more sale information
www.trianglejranch.com

All bulls are born, fed and raised from one ranch, giving you the most accurate contemporary groups possible.

Bulls will be performance tested, carcass ultrasound tested, fertility tested and will have all performance information and EPDs available.



2941D MAR INNOVATION 251 x TJ 33Y
• Top 2% CE, Top 1% API and 124 WW Ratio.



2971D CONNEALY COMRADE 1385 x TJ 34X
• Top 1% CE, BW, API.



3003D TJ MAKERS MARK 215Y x TJ 36Z
• 108 WW Ratio.



3271D TJ SHARPER IMAGE 809U x TJ 18Y
• Top 5% YW.



3471D CCR COWBOY CUT 5048Z x TJ 43Z
• Top 1% WW & TI - 124 WW Ratio.



3888D PVF INSIGHT 0129 x TJ 6U
• 117 WW Ratio.



4011D S D S GRADUATE 006X x TJ 7B
• Top 1% BW, Top 3% API.



4511D CCR COWBOY CUT 5048Z x TJ U11
• 116 WW Ratio - Top 3% TI.



4781D CCR WIDE RANGE 9005A x TJ 21Z
• One of four Full Sibs.



4861D I J COHNUSKI II 226A x I J 15I
• Purebred with Top 4% WW & YW.



4861D S A V III SOURCE 1441 x MS MISS 3061I
• Backed by a proven pedigree.



4941D CCR COWBOY CUT 5048Z x I J U14
• One of three Full Sibs - Spread Genetics.

A



Sandy Acres 5D • ASA 3189456 • Full Sib to Vision
Adj. 205: 690 • No Creep • Homo Black/Homo Polled



Sandy Acres 11D • ASA 3189514
Sire: LLSF Pays To Believe ZU194 • Adj. 205: 807
No creep • Homo Black

SANDY ACRES *Simmental*

45 years of breeding Simmentals with
calving ease and growth with maternal excellence.

ANNUAL BULL SALE

Friday, Feb. 17, 2017, 1:00 p.m.

Creighton Livestock Market, Creighton, NE

Lunch served at noon

FEATURING:

Igenity Gold profile on all bulls

Ultrasound Data

Homo black bulls

All red bulls are non-diluters



Leonard Miller: 402-887-4458

Cell: 402-640-8875

Melanie Miller: Cell: 402-841-4150

email: revdoemcl@gmail.com

www.sandyacressimmental.com

Visit us on Facebook & Instagram



Sandy Acres 12D • ASA 3189526 • 3/8 SM 5/8 AN
Sire: J&C Black Maximizer W5 • Adj. 205: 686 • No Creep



Sandy Acres 1D • ASA 3189444
Sire: Mohnen Long Distance 1639 • Adj. 205: 632
No Creep • Out of a First Calf Heifer • Homo Black

J/F J/F J/F J/F J/F J/F

*Thanks to all the buyers from our 2016 sale and
we would like to invite you to our...*

PRIVATE TREATY SALE

SATURDAY,

MARCH 11, 2017

Jager Farms Simmentals

For More Information, Please Call:

Jon Jager (308) 452-3148

Gregg Jager (308) 452-4402 or (308) 379-2899

RR 1 Box 54 Hazard NE 68844

J/F J/F J/F J/F J/F J/F



*We invite you to join the
Nebraska Simmental Association and to become
an active NSA member today.*

Send \$60 to:

Diane Duren, NSA Executive Director

PO BOX 150

Rising City NE 68658-0150

*Please include your name, ranch name,
complete mailing address
and telephone number.*

*If you know someone who would like to receive
the "Scoop" contact Diane at the above address
or call (402) 542-2119 or email
dianeduren60@gmail.com*

www.nesimmental.com

What is

API?



ASA's All Purpose Index

- Uses USDA technology and CattleFax price projections to predict profit differences between sires in units of \$ per exposed female.
- API is designed to work best when selecting sires for use in herds where daughters are retained and cull females and steers are finished and sold grade and yield.
- ASA data establishes that bulls with higher API value tend to sell for more money than lower API bulls.
- Given the above factors, breeders selecting for API are likely to improve their customers' profitability as well as their own.
- For more detailed information on API go to: http://simmental.org/site/rec_library/ and click on "making selection decisions".

 **SimGenetics**
PROFIT THROUGH SCIENCE
American Simmental Association

*Contact any
Nebraska Simmental Association member for more information
about ASA's All Purpose Index!*

*For a full NSA member listing go to
<http://www.nesimmental.com/Membership.htm>*



NEBRASKA
Simmental
Association

(402) 542-2119- NSA Office

Spring 2017 EPDs Released

Updated EPDs and indexes can be found on ASA's Herdbook website. This evaluation ushers in ASA's first multi-breed stayability analysis, where EPDs are calculated on animals of all breeds and breed combinations. The new stayability analysis achieves multiple first for ASA and IGS. Our STAY EPD is the first "Single Step" EPD ever produced in the beef industry on a large database. Single Step refers to the analysis being performed by incorporating DNA markers directly into the genetic evaluation. This approach leverages DNA in the most statistically effective way possible, yielding the most accurate EPDs possible. The STAY EPD is also the first ever published via the industry's most advanced genetic evaluation software, BOLT (Biometric Open Language Tools). Over time, ASA's full array of EPDs will be transitioned to BOLT, which will ensure that our members and their customers will have the most accurate EPDs attainable when making selection decisions.



MATT LOWERY
PROFESSIONAL
LIVESTOCK AUCTIONEER
308-750-6119
BURWELL, NE



2016/2017 Officers/Trustees Nebraska Jr. Simmental Association

Bradie Schmidt

President- 402-478-4363; kka@valmont.com

Kylie Volk

Vice-President, 402-478-4565; volkjk@aol.com

Taylor Falkenstine

Secretary 406-845-2310; windwalker5867@hotmail.com

Lauren Trauernicht

News Reporter, 402-239-4517; lolohope01@gmail.com

Natalie Trauernicht

Trustee; 402-239-6767; dtrauernicht@diodecom.net

Courtney Bockman – Trustee

Stephanie Kersten – Trustee

Junior Advisors:

Jay & Kim Volk

Scott & Denielle Trauernicht

Calendar of Events

January 2017

- Jan 12-19 Simmental Week- National Western Stock Show- Denver, CO
- Jan 28 Forster Farms 38th Annual Production Sale, Smithfield, NE-1 PM
- Jan 28 J & C Simmentals 22nd Annual Bull Sale- West Point, NE- 12:30 PM
- Jan 29 Triangle J Ranch 27th Annual Bull Sale, Miller, NE- 1:00 PM
- Jan 30 APEX Cattle Co. Annual Bull Sale- at the Ranch, Dannebrog-1 PM
- Jan 30-31 Sloup Simmentals & Friends Winter Event (Online Sale)

February 2017

- Feb 2 Sisco Bros. 6th Annual "Winter Layaway" Online SimAngus Bull Sale -hosted by Cattle in Demand
- Feb 4 Ohlrichs/Bellar Annual Bull Sale, OHL Ranch, Norfolk, NE 1 PM
- Feb 5 Blue River Gang's 35th Annual Sale, Rising City, NE-NOON
- Feb 7 & 9 "The Event" Online Bull Sales, hosted by Cattle in Demand
- Feb 16 Felt's Brand of Excellence Bull Sale, West Point, NE- NOON
- Feb 17 Sandy Acres Annual Bull Sale, Creighton Livestock Mkt, 1:00 PM
- Feb 18 Best of Both Breeds, Ames Simmentals, Wymore, NE at the farm - Private Treaty - 11:00 AM - 2:00 PM
- Feb 19 Trauernicht's 42nd Annual Bull Sale- Beatrice, NE -Noon
- Feb 18-26 26th Annual Nebraska Cattlemen's Classic, Kearney, NE
- Feb 22 NSA Annual Banquet & Awards, Kearney, NE- 6:30 PM
- Feb 23 Simmental Show and Sale, NCC, Kearney, NE-8:30 AM/1:30 PM

March 2017

- Mar 4 37th Annual Bull Sale- Flying H Genetics- Arapahoe, NE
- Mar 4 Walsh's Annual Bull Sale- Hubbard, NE begins at NOON
- Mar 5 Gateway Genetics Versatility Bull Sale- Pierce, NE
- Mar 11 Jager's Private Treaty Sale, Hazard, NE
- Mar 11 Gonsior's Annual Production Sale, Fullerton, NE
- Mar 17 Gengenbach's 9th Annual Production Sale, Imperial, NE-1 PM

May 2017

- May 20 The Spring Turnout, Seward, NE- Sloup Simmentals

June 2017

- June 2-4 20th Annual NE Jr. Beef Expo in Norfolk, NE
- Please report your upcoming sale to Diane Duren!**

**Call Diane Duren to advertise
in the SCOOP!
402-367-2272**



NE Jr. Beef Expo - June 2-4, 2017

Norfolk, NE --

Make Plans to Attend!



2016 Trauernicht Simmentals Nebraska Platinum Standard Female Sale

Sunday, December 11, 2016 * Beatrice, NE

The 2016 Nebraska Platinum Standard Production Sale was held Sunday, December 11, 2016 at Beatrice 77 Livestock, NE. The host firm of Trauernicht Simmental once again offered a functional set of hard working bred females along with an elite offering of open females and strong aged herd bull prospects. The breeders in this sale are very customer orientated and it was apparent by the large number of repeat customers that filled their trailers sale day. Guest breeders in this sale are State Line Farm Simmentals and Neumann Farms.

Lot # 112 \$5,000

LHT Mr. Top Grade 221C

MCM Top Grade 018X x LHT Ms. Dakota 41T - Bull

Buyer: Eddie Dorn, Filley, NE

Lot # 115 \$4,500

LHT Mr. Denver 125C

EXAR Denver 2002B x LHT Ms. Hot Rod 145T - Bull

Buyer: Jake Stowell, Frankfort, KS

Lot # 67 \$4,300

LHT Ms. Hummer 242B

LHT Mr. Hummer 301X x 242

Bred to W/C Lock Down 206Z

Buyer: Rodger Buehler, Adams, NE

Lot # 1a \$4,250

LHT Ms. Lock N Load 273C

Remington Lock N Load 54U x BWL Ginger 930Y

Bred to TJ High Caliber 556B

Buyer: Dean Cattle Company, Douglas, NE

Lot # 12 \$4,250

LHT Ms. Uprising 54C

LLSF Uprising Z925 x BWL Ginger 930Y

Bred to TJ High Caliber 556B

Buyer: Rains Simmentals, Dorchester, NE

Lot # 77 \$4,000

LHT Ms. Valley 129C

S A V Angus Valley 1867 x LHT Ms. I Mountain 27A

Bred to W/C Executive Order 8543B

Buyer: Mike & Luke Pietzyk, Burr, NE

Lot # 79 \$4,000

LHT Ms. Cash 250B

Barstow Cash x LHT Ms. Bismark 88Z

Bred to Laflin Wam Pum

Buyer: Mike & Luke Pietzyk, Burr, BE

Lot # 68 \$3,750

LHT Ms. Steel Force 270B

SVF Steel Force S701 x T K Edella R372

Bred to W/C BF Innocent Man, Buyer: Mike & Luke Pietzyk, Burr, NE 91

Lot # 71 \$3,750

LHT Ms. Amigo 268B

GCF Mr. Amigo x LHT Ms. Teddy 309X

Bred to W/C Executive Order 8543B

Buyer: Courtney Lovett, Blue Hill, NE

Lot # 57 \$3,700

JZ Ms. Freedom 07C

ASR Augustus Z2165 x HPF Independence X903

Bred to KnH Added Value 58W

Breeder: State Line Farm Simmentals

Buyer: Lehrman Family Simmentals,

LLSF Uprising Z925 x Lazy H Miss Remington - Open

Buyer: Gary Stearns, North Platte, NE

Averages

7 Simmental & Sim-Influenced Opens avg- \$2,921

72 Simmental & Sim-Influenced Breds avg- \$2,560

7 Simmental & Sim-Influenced Bulls avg-\$3,050

5 Simmental & Sim-Influenced Fall Pairs avg-\$2,540

Total Lots averaged \$2,624

It's a Fact!

**The Most Profitable Calf
is the Crossbred Calf.**

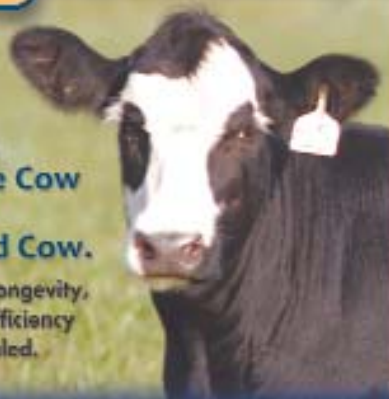
Its superior performance, efficiency and
combination of carcass traits
cannot be matched.



SimAngus™

**The Most
Profitable Cow
is the
Crossbred Cow.**

Her superior longevity,
fertility and efficiency
cannot be rivaled.



**Don't take
our word
for it.**

The data provided by the USDA through the Meat Animal Research Center shows the clear choice to maximize profit. SimAngus™ provides the hybrid vigor and complementarity necessary to maximize profit both in the cowherd and feeder calf scenario.

Contact any Nebraska Simmental Association

member for more information about

SimAngus - The Obvious Choice!

For a full NSA member listing

go to

<http://www.nesimmental.com/Membership.htm>



NEBRASKA Simmental Association

(402) 367-2272- NSA Office



Looking at Me?

It's ok. Everybody Is.

SimAngus™.
The Obvious Choice.

2012 Across-Breed FRD
 Table, GPE Rep. 22,
 MARC, USDA
 * Major Continental
 Breeds — Simmental,
 Gelbvieh, Limousin,
 Charolais

Trait	Simmental Rank vs. Major Continental Breeds*	Angus/Red Angus Rank vs. Major British Breeds
Marbling Score	First	Second
Carcass Weight	First	First
1 Retail Product	Second	First
Weight Gain Feed Efficiency	First	Second
Weaning Weight	Second	First
Post Weaning Gain	Second	Second
Shear Force	First	First

"Crossbred steers with a **50:50 ratio of Continental European to British breed** inheritance are likely to produce a more **optimum** balance between carcass **quality grade** and **yield grade** than crossbred or straightbred steers that represent either 100% British breed, or 100% Continental European breeding."

— MARC GPE Progress Report No. 22, USDA

Contact any
Nebraska Simmental Association member for more information
about SimAngus - The Obvious Choice!
For a full NSA member listing go to
<http://www.nesimmental.com/Membership.htm>



NEBRASKA
Simmental
Association

(402) 367-2272- NSA Office

Trauernicht Simmentals *42nd Annual* **PRODUCTION SALE 2017**

Sunday February 19th 12:00 Noon

Beatrice 77 Livestock • Beatrice, Nebraska

LiveAuctionsTV ONLINE BIDDING!



LHT Mr. United 87D

W/C United 956Y x WLE Power Stroke
BW 1.5 WW 75 YW 174 API 144 TI 80



LHT Dream Order 03D

W/C Executive Order x WWS Antoinette 228
BW -0.7 WW 73 YW 113 API 142 TI 81



LHT Right Grade 32D

Mr NLC Upgrade x CR/DCC Copy Right 6626
BW 1.9 WW 67 YW 89 API 115 TI 69



LHT Mr. Lock N Load 348C

Remington Lock N Load x HC Hummer 12M
BW 1.8 WW 57 YW 99 API 114 TI 66



LHT Mr. Executive 99D

W/C Executive Order x LHT Star Struck 112W
BW -1.0 WW 62 YW 97 API 137 TI 75



LHT Mr. Beef King 313C

WS Beef King W107 x GCF Amigo
BW 1.5 WW 78 YW 110 API 130 TI 80



LHT Mr. Redemption 303C

Brown JYJ Redemption Y1334 x PCC Colorado Hobo
BW -3.4 WW 57 YW 99 API 128 TI 68



LHT Mr. Beef King 336C

WS Beef King W107 x PCC Colorado Hobo
BW -0.1 WW 67 YW 98 API 150 TI 78



LHT Mr. Upgrade 92D

BW 2.0
WW 70
YW 107
API 114
TI 78

Mr NLC Upgrade U8676 x DCC Magnitude 885



901 E Pine Road, Wymore, NE 68466
www.trauernichtsimmentals.com

Loren 402-645-8306
or 402-230-0812
Scott 402-239-1272



Sale Managers: EBERSPACHER ENT.

Office 507-532-6694 • Val 612-805-7405

Kelly Schmidt 406-599-2395

Full sale offering online at Ebersale.com

Guest Breeder: State Line Simmental 402-239-0843

95 PERFORMANCE TESTED BULLS

**Selling 65 Performance
Tested Bulls**
Purebred & SimAngus™

FELT FARMS BRAND OF Excellence PRODUCTION SALE 2017

Guest Breeders:
Roberts Simmental 402-369-1002
& Volk Livestock 402-922-9997



FELT TRUMP 318D
Sired by Nelson Style 4418
SimAngus • BW 80 • WW 804



FELT BIG BEN 6D
Sired by Harkers Johnny Ringo
SimAngus • BW 80 • WW 794



FELT PEDRO 176D
Sired by Nelson Style 4418
SimAngus • BW 80 • WW 800



FELT CANDY MAN 41D
Sired by Harkers Johnny Ringo
SimAngus • BW 86 • WW 868



FELT ROCK STAR 685D
Sired by Harkers Johnny Ringo
SimAngus • BW 83 • WW 824



FELT FED EX 345D
Sired by B C Lookout 7024
PB Simmental • BW 79 • 822

**Thursday,
February 16th
12:00 Noon**
Sale Location: West
Point Livestock Auction
West Point, NE

**FELT
FARMS**
Merlin, Delores & James Felt
James 402-369-0513 or
402-287-2488
57977 857 RD
Wakefield, NE 68784
Catalog will be online at
www.feltfarms.com



FELT PENCE 33D
Sired by Nelson Style 4418
SimAngus • BW 802 • WW 803



FELT SWEET BABY NICK 702D
Sired by Harkers Johnny Ringo
SimAngus • BW 80 • WW 863



FELT RED EAGLE 772D
Sired by HPF Dominance Y827
PB Simmental • BW 83 • 883



SALE MANAGED BY EBERSPACHER ENTERPRISES INC.

Office 507-532-6694 • Vol Call 612-805-7405 • Kelly Schmidt 406-599-2395
FULL CATALOG ONLINE AT WWW.EBERSALE.COM